

LOT TABLE			
LOT NO.	USABLE AREA (SF)	STREET AREA (SF)	TOTAL AREA (SF)
1	9230	1803	3842
2	6306	2640	5614
3	6904	2640	4400
4	6871	2642	4400
5	9888	4495	2187
6	8522	824	5678
7	6995	1510	3944
8	5843	1510	7908
9	7652	824	10282
10	5630	900	5637
11	8941	1973	1846
12	7905	2331	4447
13	7201	3720	3720
14	6604	2559	3198
15	6604	2559	2897
16	6604	2560	2836
17	8575	9798	19839
18	8886	5465	5114
19	8019	2074	8375
20	8450	5336	3172
21	8162	2602	2710
22	7759	2638	6992
23	12000	N/A	12000
24	12000	N/A	12000
25	12000	N/A	12000
26	12000	N/A	12000
27	12000	N/A	12000
28	12000	N/A	12000



CURVE	RADIUS	ARC	CHORD	CHORD BRG
C1	15.00'	32.19'	26.36'	S46°32'23"W
C2	15.00'	32.43'	26.47'	S46°59'45"W
C3	22.00'	51.21'	40.41'	N42°15'14"E
C4	15.00'	12.63'	12.26'	N46°56'42"W
C5	15.00'	14.69'	14.11'	S43°00'15"E

LAUREL PEARL MONTAGNET, ET AL
601 CAMBRIDGE DRIVE
LAFAYETTE, LA 70503

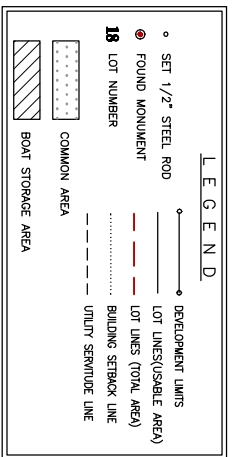
LAUREL PEARL MONTAGNET, ET AL
601 CAMBRIDGE DRIVE
LAFAYETTE, LA 70503

GENERAL NOTES	
TOTAL NUMBER OF LOTS	28
TOTAL AREA 1 DEVELOPMENT	10.98 ACRES
TOTAL AREA 2 DEVELOPMENT	7.99 ACRES
TOTAL AREA 3 DEVELOPMENT	2.39 ACRES
AREA OF RESIDENTIAL LOT (SHEAR)	5.50 ACRES
AREA OF BOAT STORAGE AREA	0.24 ACRES
AREA OF PRIVATE STREETS	1.49 ACRES
MINIMUM LOT SIZE	12000 SQ. FT.
MINIMUM LOT FRONTAGE	60.00 FT.
MUNICIPAL NUMBER	(000)

OWNERS/APPLICANT
BIL VENTURES, LLC
P.O. BOX 80098
LAFAYETTE, LA 70506
PH. (337) 261-2617
FAX (337) 261-1934

SURETOR
WILL J. GOURRY, PLS
148-B EASY STREET
LAFAYETTE, LA 70506
PH. (337) 232-0777
FAX (337) 232-0851

ENGINEER
TODD A VINCENT PE, PLS
148-B EASY STREET
LAFAYETTE, LA 70506
PH. (337) 232-0777
FAX (337) 232-0851



I CERTIFY THAT THIS PLAN AGREES WITH THE BOUNDARY SURVEY PERFORMED BY MLC AS REFERRED TO IN THE PLAN AND SHOWING PROPERTY OF BIL VENTURES, LLC DATED OCTOBER 24, 2008 AND BOUNDARY MONUMENTS WERE VERIFIED AND THE SURVEY CONFORMS WITH THE APPLICABLE MINIMUM STANDARD FOR PROFESSIONAL SURVEYING IN THE STATE OF LOUISIANA. UNLESS OTHERWISE SHOWN, NO RESEARCH OR FIELD SURVEY WAS PERFORMED ON THE WEST SIDE OF LIVE OAK ROAD. ALL INFORMATION SHOWN ON THIS PRELIMINARY PLAN WAS OBTAINED FROM BOUNDARY SURVEY

W. J. GOURRY, PLS REG. NO. 4792

LEGAL DESCRIPTION:
AREA 1: Commencing at a 1" iron pipe along the western right-of-way of Live Oak Road and bearing S17°30'39"E, a distance of 480.2 feet to the Point of Beginning; distance of 37.81 feet; thence N1°38'32"W, a distance of 239.87 feet; thence N70°41'44"W, a distance of 262.56 feet; thence N70°42'32"W, a distance of 51.18 feet; thence N15°01'02"W, a distance of 65.16 feet; thence N2°40'58"W, a distance of 73.58 feet; thence N27°37'03"W, a distance of 48.54 feet; thence N65°53'28"W, a distance of 27.74 feet; thence N29°58'48"W, a distance of 27.74 feet; thence N49°39'54"W, a distance of 8.00 feet; thence N08°31'02"W, a distance of 58.86 feet; thence N22°49'35"W, a distance of 13.08 feet; thence N24°25'27"W, a distance of 146.41 feet; thence S70°42'39"E, a distance of 156.23 feet; thence S71°03'39"E, a distance of 555.39 feet to the Point of Beginning. Containing 7.99 Acres, more or less.

AREA 2: Commencing at a 1" iron pipe along the western right-of-way of Live Oak Road; thence S71°30'39"E, a distance of 480.2 feet to the Point of Beginning; distance of 37.81 feet; thence N1°38'32"W, a distance of 239.87 feet; thence N70°41'44"W, a distance of 262.56 feet; thence N70°42'32"W, a distance of 51.18 feet; thence N15°01'02"W, a distance of 65.16 feet; thence N2°40'58"W, a distance of 73.58 feet; thence N27°37'03"W, a distance of 48.54 feet; thence N65°53'28"W, a distance of 27.74 feet; thence N29°58'48"W, a distance of 27.74 feet; thence N49°39'54"W, a distance of 8.00 feet; thence N08°31'02"W, a distance of 58.86 feet; thence N22°49'35"W, a distance of 13.08 feet; thence N24°25'27"W, a distance of 146.41 feet; thence S70°42'39"E, a distance of 156.23 feet; thence S71°03'39"E, a distance of 555.39 feet to the Point of Beginning. Containing 7.99 Acres, more or less.

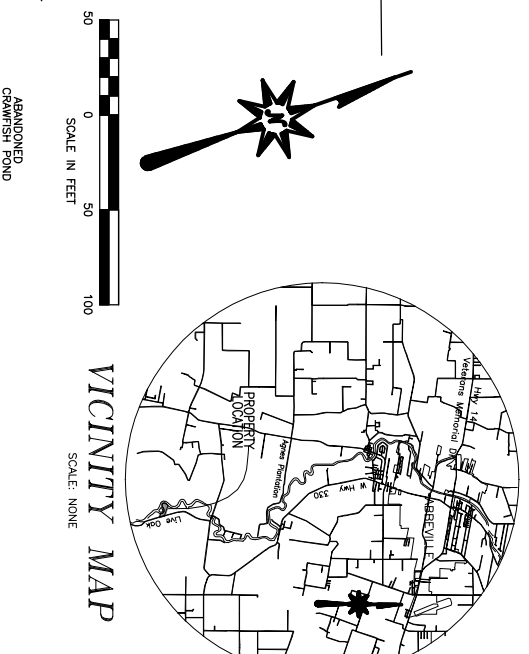
AREA 3: Commencing at a 1" iron pipe along the western right-of-way of Live Oak Road and bearing S17°30'39"E, a distance of 480.2 feet to the Point of Beginning; distance of 37.81 feet; thence N1°38'32"W, a distance of 239.87 feet; thence N70°41'44"W, a distance of 262.56 feet; thence N70°42'32"W, a distance of 51.18 feet; thence N15°01'02"W, a distance of 65.16 feet; thence N2°40'58"W, a distance of 73.58 feet; thence N27°37'03"W, a distance of 48.54 feet; thence N65°53'28"W, a distance of 27.74 feet; thence N29°58'48"W, a distance of 27.74 feet; thence N49°39'54"W, a distance of 8.00 feet; thence N08°31'02"W, a distance of 58.86 feet; thence N22°49'35"W, a distance of 13.08 feet; thence N24°25'27"W, a distance of 146.41 feet; thence S70°42'39"E, a distance of 156.23 feet; thence S71°03'39"E, a distance of 555.39 feet to the Point of Beginning. Containing 7.99 Acres, more or less.

FLOOD NOTE:
THIS PROPERTY HAS BEEN DETERMINED TO BE LOCATED IN ZONE AE (EL. 10) AREA OF 100 YR FLOOD. BASE FLOOD ELEVATIONS AND FLOOD HAZARD FACTORS DETERMINED AS INDICATED BY THE FLOOD INSURANCE RATE MAPS FOR VERMILION PARISH, LOUISIANA, MAP NUMBER 220221 0450 AND 04500. EFFECTIVE DATE MAY 15, 1985.

THIS PROPERTY HAS ALSO BEEN DETERMINED TO BE LOCATED IN ABE ZONE AE (EL. 11) AS INDICATED BY THE HURRICANE RITA SURGE INUNDATION AND ADVISORY BASE FLOOD ELEVATION MAPS FOR VERMILION PARISH, LOUISIANA, MAP NUMBERS LA-257 AND LA-258.

DATE OF EVENT: SEPTEMBER 24, 2005 DATE OF MAP: MARCH 16, 2008

THIS PROPERTY HAS ALSO BEEN DETERMINED TO BE LOCATED IN ZONE AE (EL. 12) AND ZONE AE (EL. 13) AS INDICATED BY THE FLOOD INSURANCE RATE MAPS FOR VERMILION PARISH, LOUISIANA, MAP NUMBER 2211300500 - EFFECTIVE JANUARY 19, 2011.



DESIGNER L. CRAMER	DATE OCTOBER 2010	PROJECT 7550-05	CLIENT VERMILION
DRAWN BY J. FABRE	SCALE AS SHOWN	FILE NO. 7550-05-03	CLIENT BIL VENTURES, LLC
NO.	DATE	REVISION DESCRIPTION	PROJECT 7550-05

Sellers & Associates, Inc.
ENGINEERS SURVEYORS
148-B Easy Street, Lafayette, LA 70506 (337) 232-0777

LE VIRAGE MARINA
LOCATED IN SECTION 04, T-4-S, R-4-E, VERMILION PARISH, LOUISIANA
PROPOSED SITE PLAN

SCALE: NONE